

WALLPAPER AND SURFACE  
DESIGN



# JACQUELINE W. NUZZO

2020 - 2025

**ART DIRECTOR | DESIGNER**

Specializing in handmade and digital wallpaper design for interior designers in the luxury, hospitality, and residential sectors.

*[jacquelinenuzzo.com](http://jacquelinenuzzo.com)  
[jwnuzzo@gmail.com](mailto:jwnuzzo@gmail.com)  
619 - 993 - 5698*

# Index / Content

03	About Me
04	Confidential Client
16	Repeat Patterns
24	Site-Specific Installations
32	Wallpaper with 3D Elements
38	Handmade Wallcoverings

# ABOUT ME



I'm a designer and creative director with a background in printmedia, textiles, and luxury surface design. Over the past seven years, I've developed custom wallcoverings, printed artworks, and visual content for high-end interiors—collaborating closely with artists, vendors, and production teams

to bring complex concepts to life. My approach combines material sensitivity, technical rigor, and an eye for refinement.

With an MFA from the School of the Art Institute of Chicago and experience leading creative direction at Maya Romanoff and

Grand Image, I specialize in translating handmade processes into scalable, production-ready designs. I'm passionate about objects that live in space—how they hold texture, light, and mood—and I'm now focused on product design that merges tactile richness with conceptual clarity.

# HANDMADE & TEXTURAL WALLCOVERINGS

Studio-crafted wallcoverings emphasizing materiality and surface design. These pieces are developed using techniques like hand-applied plaster, layered painting, and digital-meets-handmade processes.



# Bloomingdales

New York City, NY

## Copper Wallcovering

Company: Maya Romanoff

Role: Associate Studio Creative Director

2024

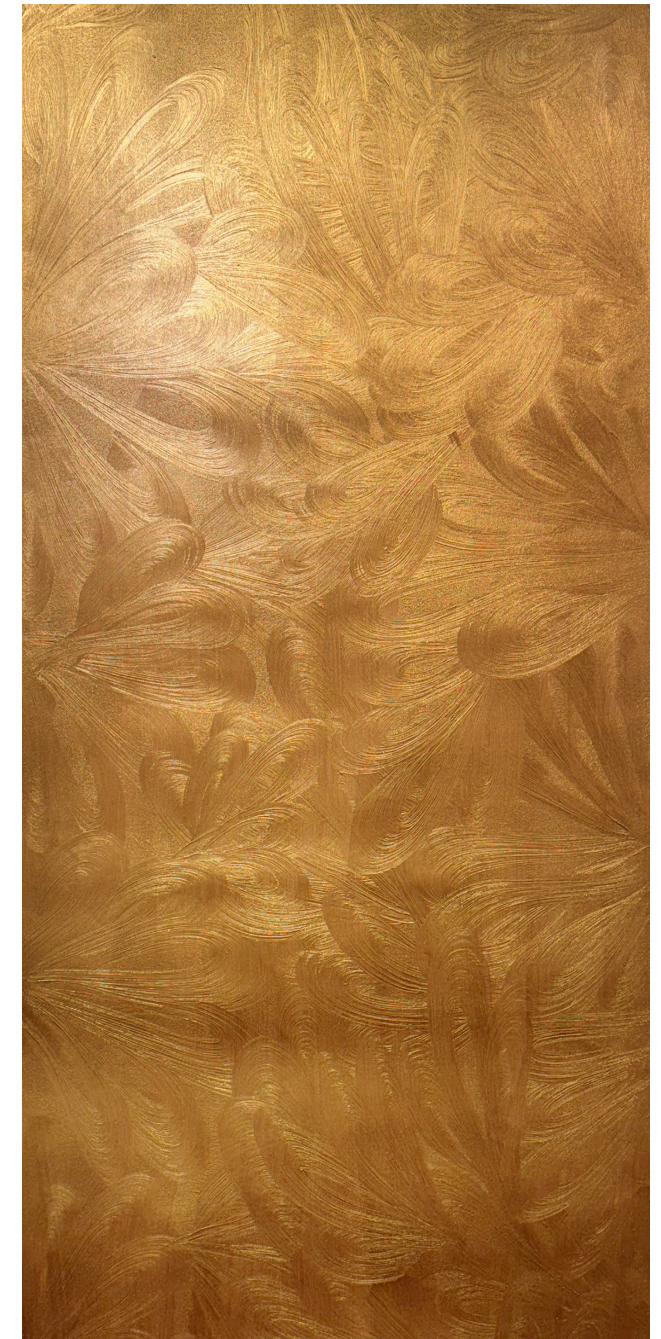
Bloomingdale's commissioned a wallcovering in earthy tones featuring a textural, ethereal quality. I crafted a hand-applied plaster design that exudes subtle elegance, enhanced by metallic copper accents that shimmer delicately in the light.

## Custom Textured Plaster

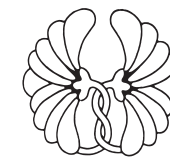
Hand-Painted Textured Plaster with Metallic Accents

Version 1 Reduced Scale

Digital Representation



38" (152.4 cm)



ATELIER  
MAYA ROMANOFF

X

Sign here for the following as of May 5, 2025:

- Digital Print Artwork

©MAYA ROMANOFF | MAYAROMANOFF.COM



# Marina Bay Sands

Singapore

## Mountainscape Wallcovering

Company: Maya Romanoff

Role: Associate Studio Creative Director

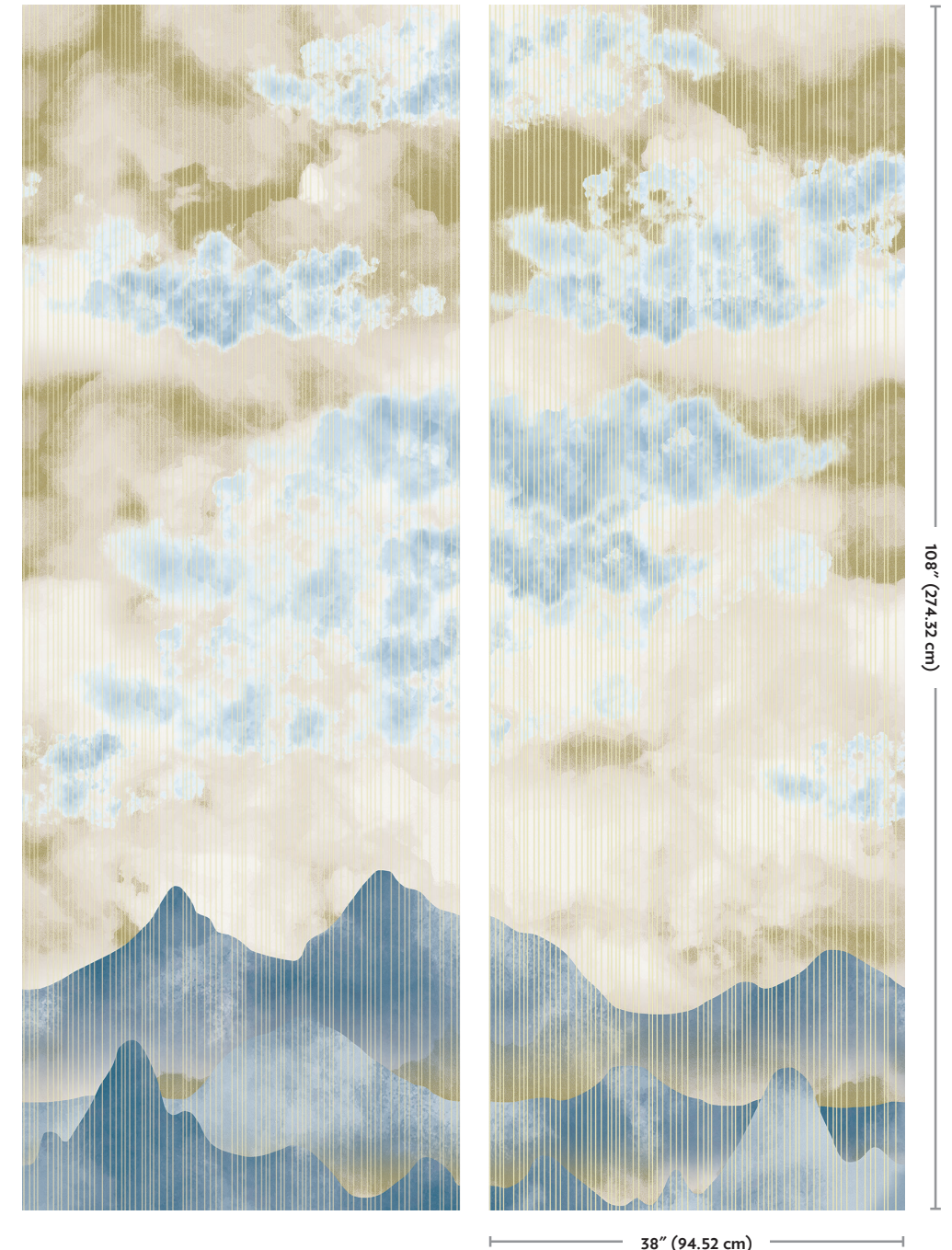
2025

The Marina Bay Sands hotel commissioned a repeat mountain scape wallcovering. To enhance the visual depth, I overlaid hand-painted striped textures onto the digital print, adding dimensionality and movement.

## Custom Digital Print

Hand-Painted Accents  
Version 2B Reduced Scale

Digital Representation



X

Sign here for the following as of Feb 10, 2025:

- Digital Print Artwork

©MAYA ROMANOFF | MAYAROMANOFF.COM

# Restoration Hardware

London, UK

## Patterned Wood Wallcovering

Company: Maya Romanoff  
Role: Associate Studio Creative Director

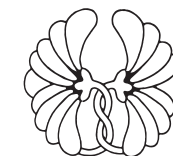
2024

Restoration Hardware was seeking a natural yet understated update to a wood veneer pattern. Utilizing Paulownia, I developed a series of warm textures that subtly revealed a randomized checkerboard design, balancing structure with softness.

## Custom Bespoke Wood Veneer

Hand-Inlaid Natural Wood Veneer  
Version 1 Reduced Scale

Digital Representation



ATELIER  
MAYA ROMANOFF

X

Sign here for the following as of Dec 19, 2024:

- Digital Print Artwork

©MAYA ROMANOFF | MAYAROMANOFF.COM

# **WALLCOVERINGS WITH 3D ELEMENTS**

Projects that integrate wallcoverings with sculptural components such as laser-cut felt, metal discs, and rope embellishments. These works blend 2D and 3D design to create immersive, textural environments.



# Delta Calgary Airport Hotel

Calgary, Alberta, Canada

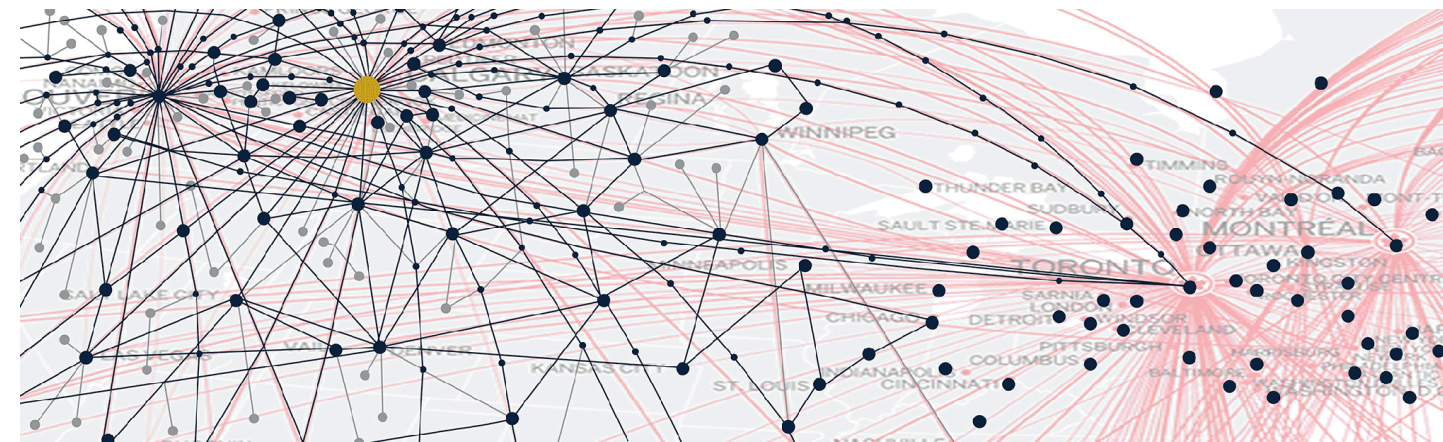
## Wallcovering with 3D Elements

Company: Grand Image LTD

Role: Lead Digital Artist & Content Manager

2022

Calgary, a bustling metropolis known for its skyscrapers and oil-rich heritage, is a major airport hub in Alberta. For the Calgary International Airport hotel lounge—the fourth-busiest airport in Canada—we partnered with CHIL Design and Delta Hotels to refresh the space with artwork inspired by Canadian flight maps and the cool tones of the northern wilderness.



The focal piece captures a sense of movement and place, reflecting the energy of the airport and the journeys travelers undertake. I experimented with various colors, line widths, and curved flight paths to create visual harmony across the design. Adjustments were made to balance the spacing, allowing 3D discs and hubs to integrate seamlessly. We explored multiple background color options and treatments to find the perfect equilibrium among the backdrop, discs, and cord embellishments.

Designed by CHIL Interior Design for Delta Hotels

Photography by Eymeric Widling



# GOOGLE

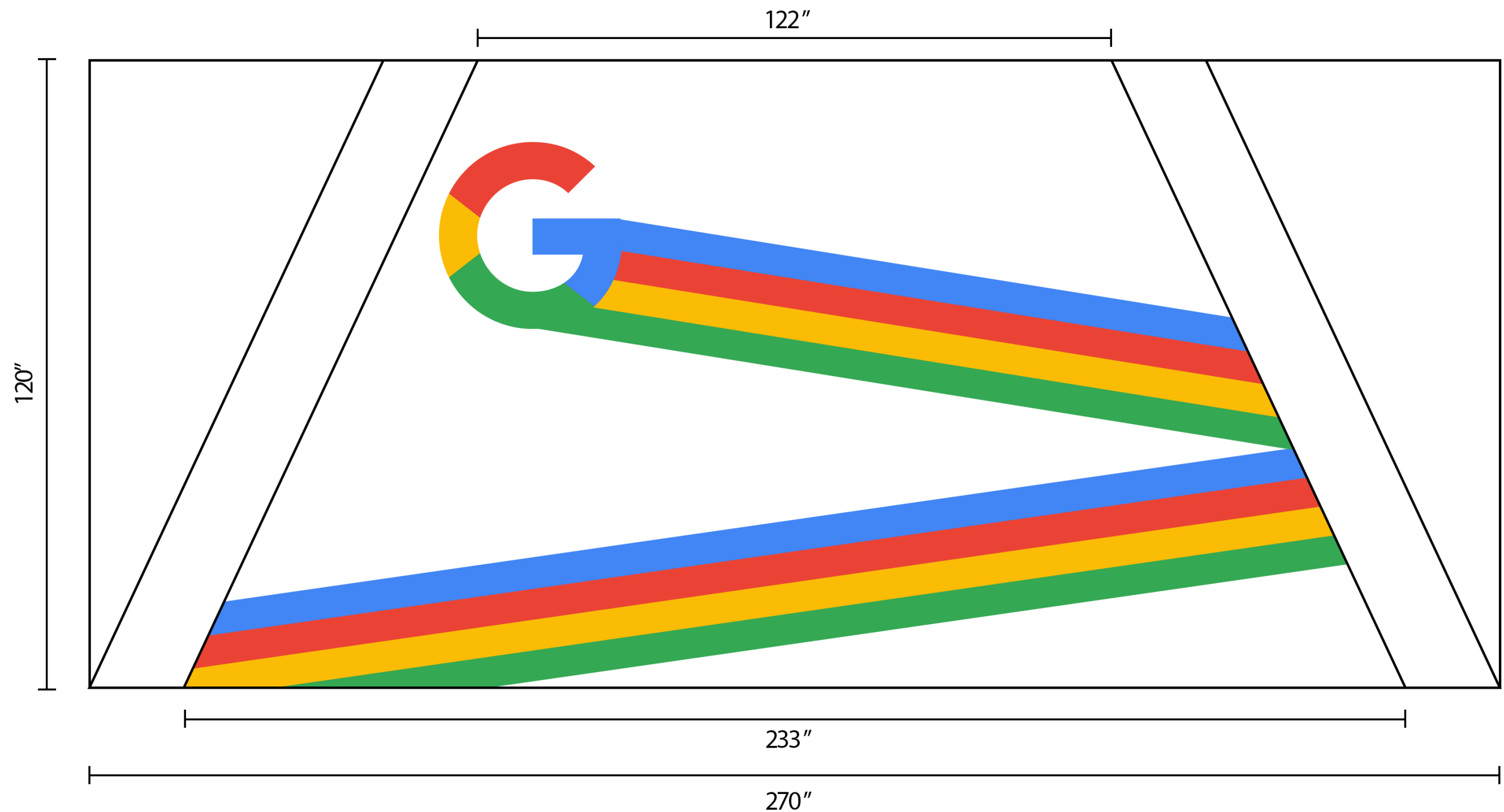
Sunnyvale, CA

Company: Grand Image LTD

Role: Lead Digital Artist & Content Manager

2021

The client requested a logo wallcovering designed to fit within the specific constraints of architectural beams obstructing the wall. I also created precise die-cut files to enable laser-cutting of coordinating felt components for the letter "G."



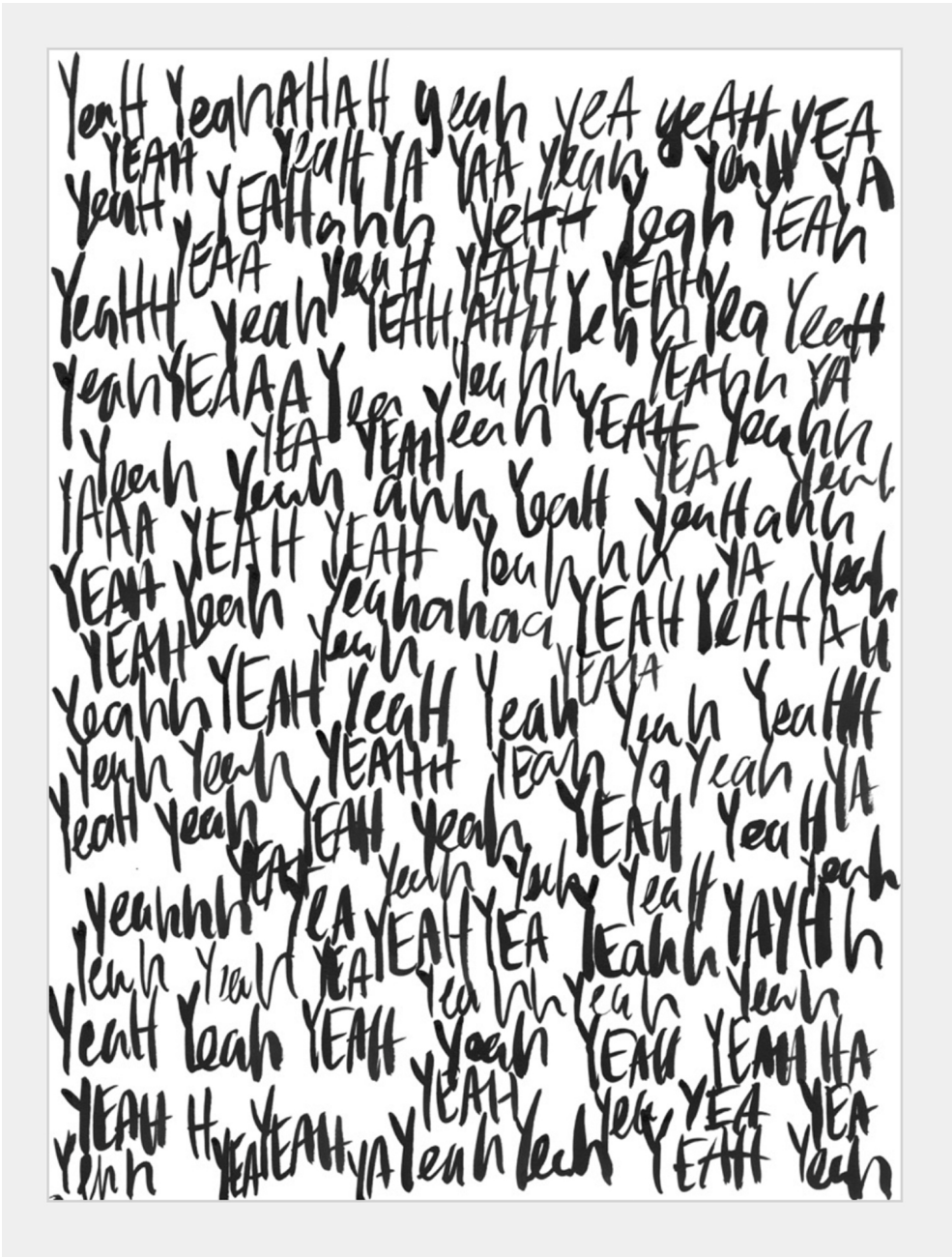
# REPEAT WALLCOVERINGS

Digitally produced repeat patterns designed for production and installation in hospitality and residential settings. These projects include colorway development, asset sourcing, and print file prep.



# HIGH POINT FURNITURE MARKET

High Point, NC



## Display Booth Wallcovering

Company: Grand Image LTD  
Role: Lead Digital Artist & Content Manager

2022

This repeat wallcovering was designed for Grand Image Home's display at the 2022 High Point Furniture Market. Using photographic assets created by our in-house painter, Kate Roebuck, I developed the repeat tile and crafted multiple colorways.



# GRAND IMAGE HOME



## In-Line Product Development

Company: Grand Image LTD

Role: Lead Digital Artist & Content Manager

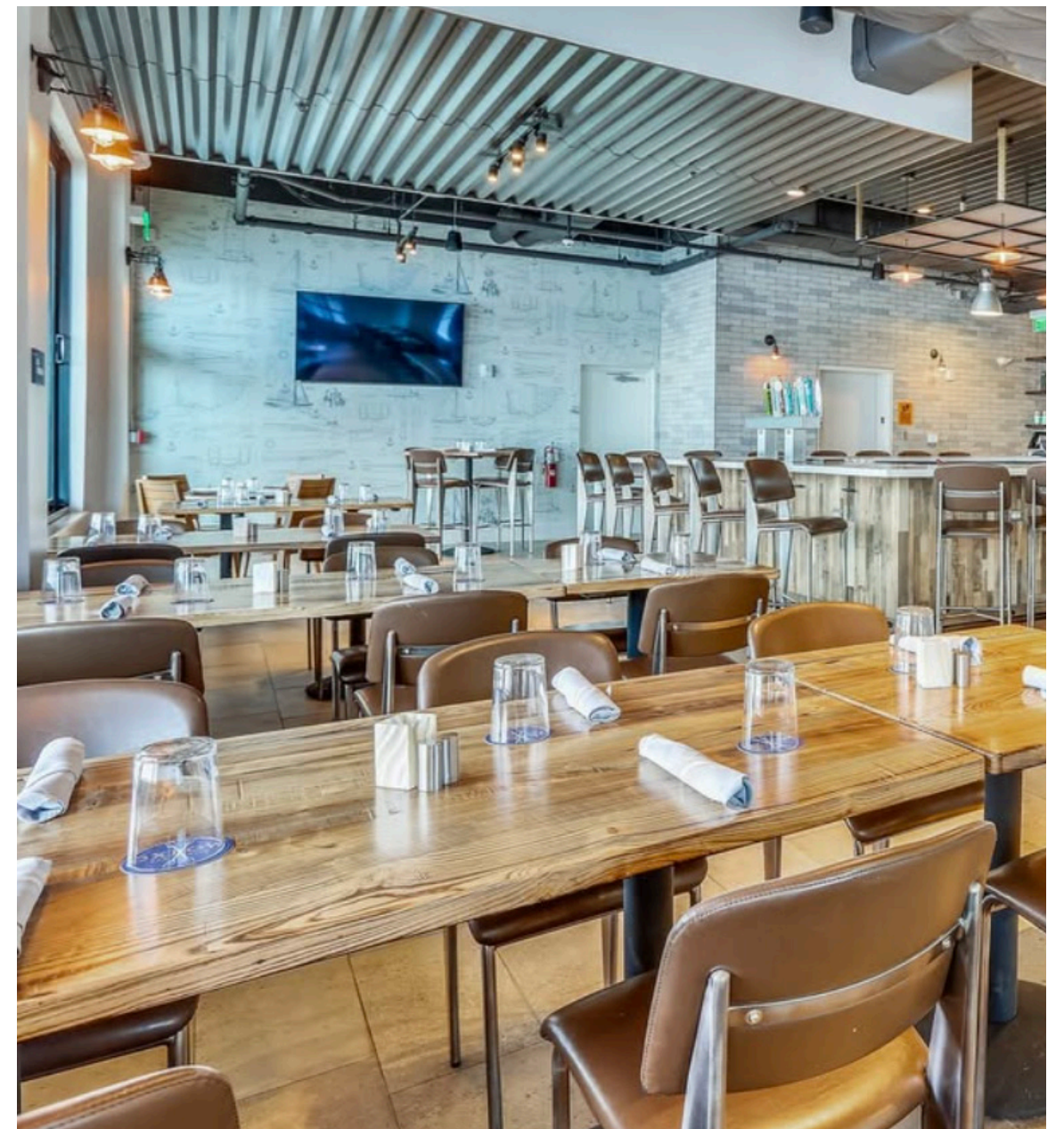
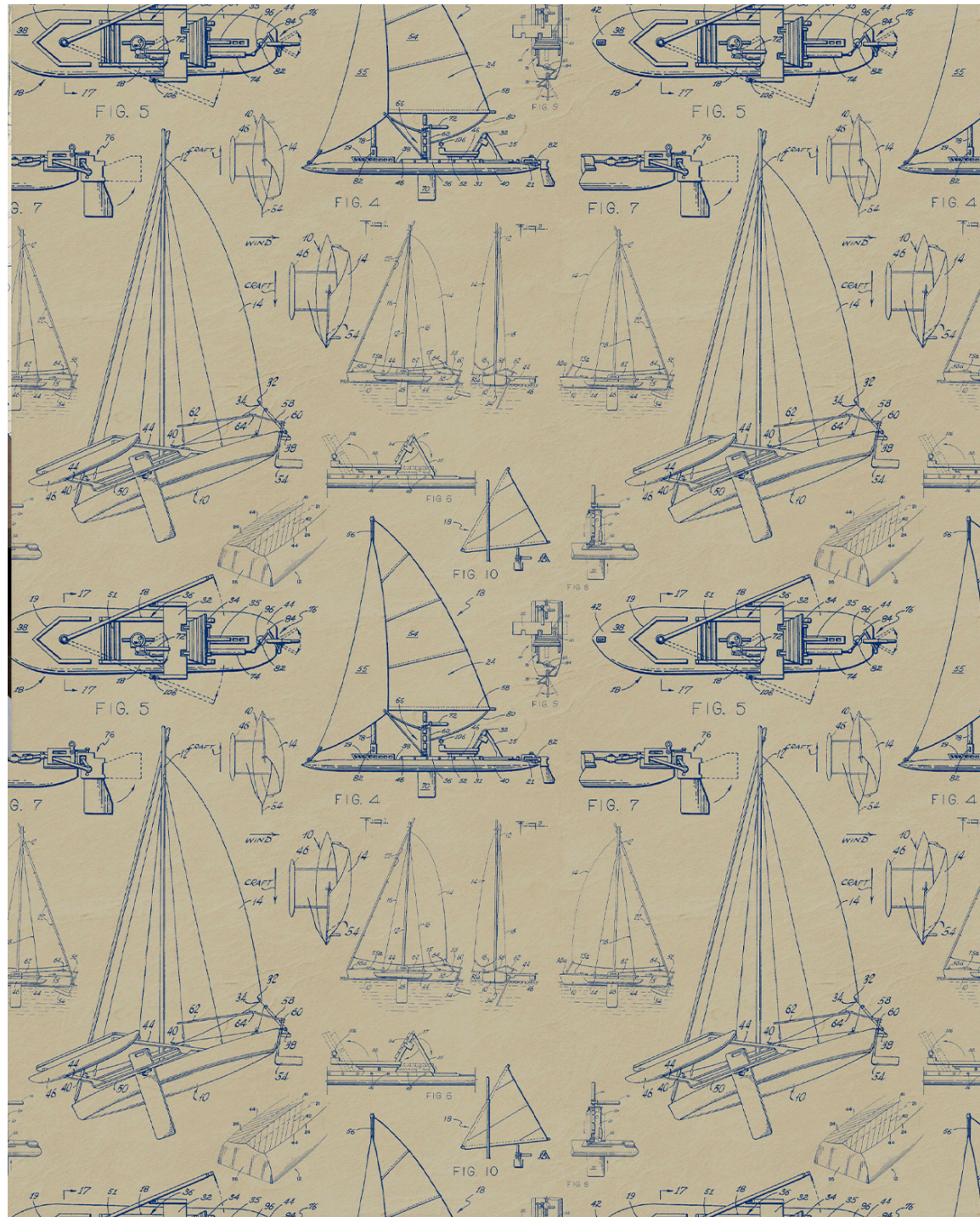
2020

I created this repeat patterned wallcovering for the company's home decor line, Grand Image Home, using photographic assets by painter Michael Doyle. My process involved capturing the original painting, selecting key elements, digitally constructing the repeat pattern, adding texture, and producing multiple colorways.



# OXBOW RESTAURANT

Fort Myers, FL



## Nautical Wallcovering

Company: Grand Image LTD

Role: Lead Digital Artist & Content Manager

2021

I designed a repeat patterned wallcovering using public domain sailboat patents as inspiration. The process included researching sailboat patents, selecting key visuals, digitally constructing a repeat pattern, adding texture, and producing multiple colorways aligned with the client's branding.



# CONFIDENTIAL CLIENT

Creative direction and custom wallcovering design for a Fortune 500 client. These large-scale installations span eight floors and include sculptural and painted elements. Work shown with permission under NDA.

This project centered on the theme of celebrating people, realized through impactful portraiture and large-scale hanging installations. I was responsible for overseeing all digitally produced artwork from concept to production, including managing a team of four artists, quoting each project, delegating tasks, and managing creative direction across all eight floors.



# CONFIDENTIAL CLIENT

Sunnyvale, California

## Cloud Ceiling

**Company:** Grand Image LTD  
**Role:** Lead Digital Artist &  
Content Manager

2021-2022

I created this expansive ceiling wallcovering, visible from all eight floors of the building. Measuring an impressive 488.5 inches wide by 277.25 inches high, the piece was built from over 40 photographic assets of clouds.

Due to its massive scale, maintaining image clarity and resolution was a significant technical challenge. Each asset had to be carefully selected, scaled, and retouched to ensure visual quality across the full surface. The result is a bright, playful cloud-scape that brings warmth and a sense of human connection to the space—reinforcing the company's people-first identity.





# CONFIDENTIAL CLIENT

Sunnyvale, California

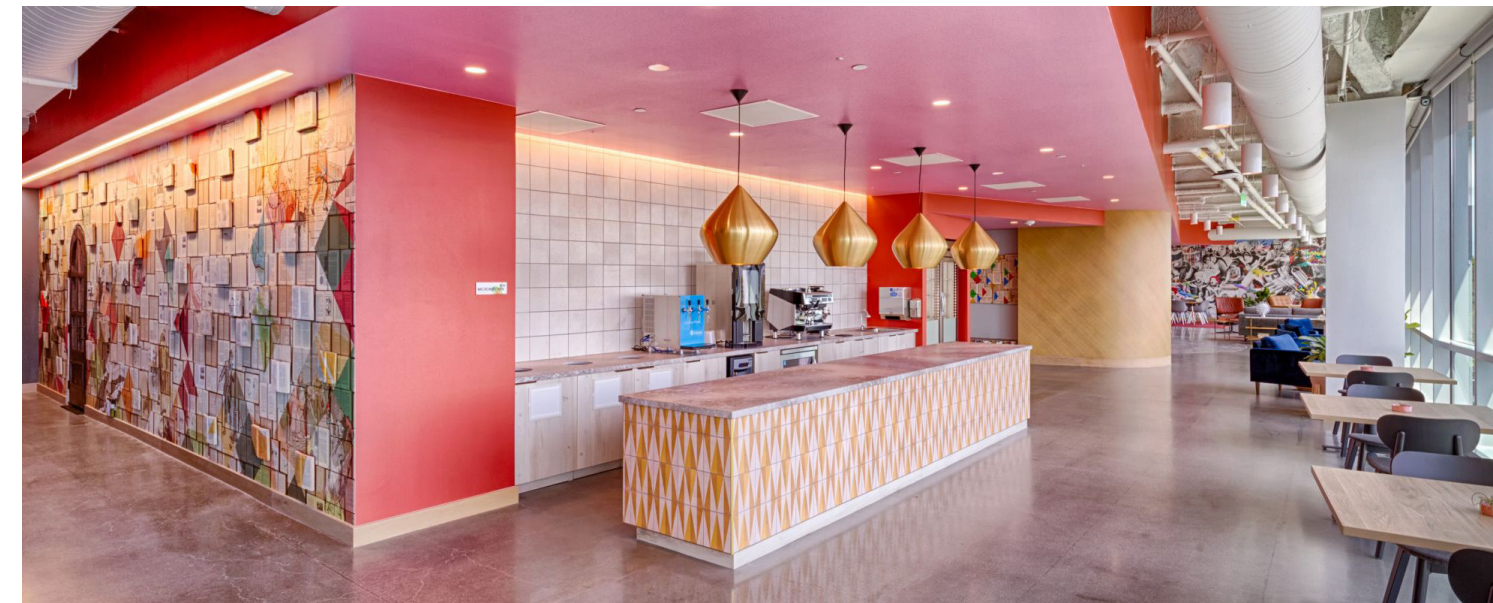
## Literary Book Wall

**Company:** Grand Image LTD  
**Role:** Lead Digital Artist &  
Content Manager

2021-2022

This full-wall installation features a custom-designed wallcovering overlaid with sculpted physical books. My studio created the wall-covering by collaging hundreds of scanned book pages into a seamless, immersive pattern. The 2D Studio then installed and shaped real books directly onto the surface, carefully sculpting them to remain open in dynamic, three-dimensional forms.

Precise planning was essential, as the digital wallcovering had to be built to exact scale to accommodate the placement of physical books and integrated hand-drawn elements.



On top of this layered base, my team hand-painted geometric motifs, illustrations of literary figures, and hidden easter eggs referencing the client. I provided full artistic direction throughout the project—concepting the initial sketch, sourcing books, and offering feedback from start to finish.





# CONFIDENTIAL CLIENT

Sunnyvale, California

(\*)

(\*)

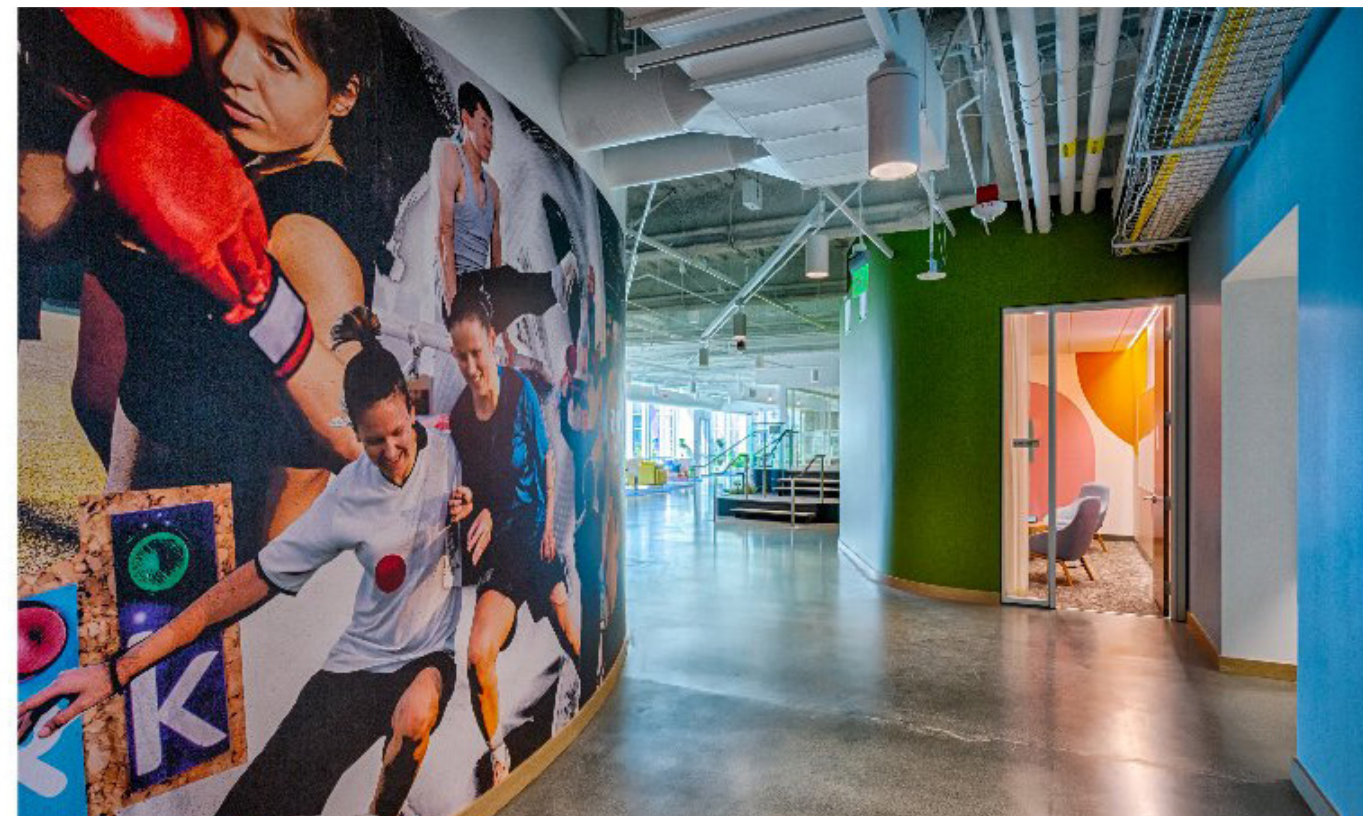


## Custom Wallcoverings

Company: Grand Image LTD  
Role: Lead Digital Artist & Content Manager

2021-2022

Wallcoverings on every level offered bursts of inspiration and subtle references to each theme. Notable installations included sports and fashion collages wrapped around floor-to-ceiling cylindrical beams. All images shown represent projects I led, with those marked (\*) indicating pieces I personally created.





# CONFIDENTIAL CLIENT

Sunnyvale, California



## Upside Down Dinner Party

Company: Grand Image LTD

Role: Lead Digital Artist &  
Content Manager

2021-2022

This client concept was realized through the 3D team's sourcing of life-size chairs, plates, and cups, all painted to precisely match the client's color palette. The table, crafted by the 3D studio, was installed in five segments and surrounded by 30 chairs.

I collaborated closely with the 3D team to design and create custom floor stencils, producing the die-cut files that contributed to a flipped narrative, visually articulating chandeliers in the space.



# CONFIDENTIAL CLIENT

Sunnyvale, California

## Polaroid Wall

Company: Grand Image LTD  
Role: Lead Digital Artist &  
Content Manager

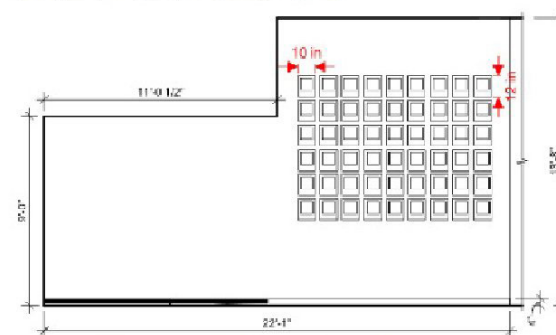
2021-2022

I designed this Polaroid wall as a tribute to fashionable individuals from all walks of life, encompassing diverse ages, abilities, and ethnicities.

I sourced the images and produced die-cut files to enable printing on reflective white metal, which creates a realistic shimmer and brings the portraits to life.

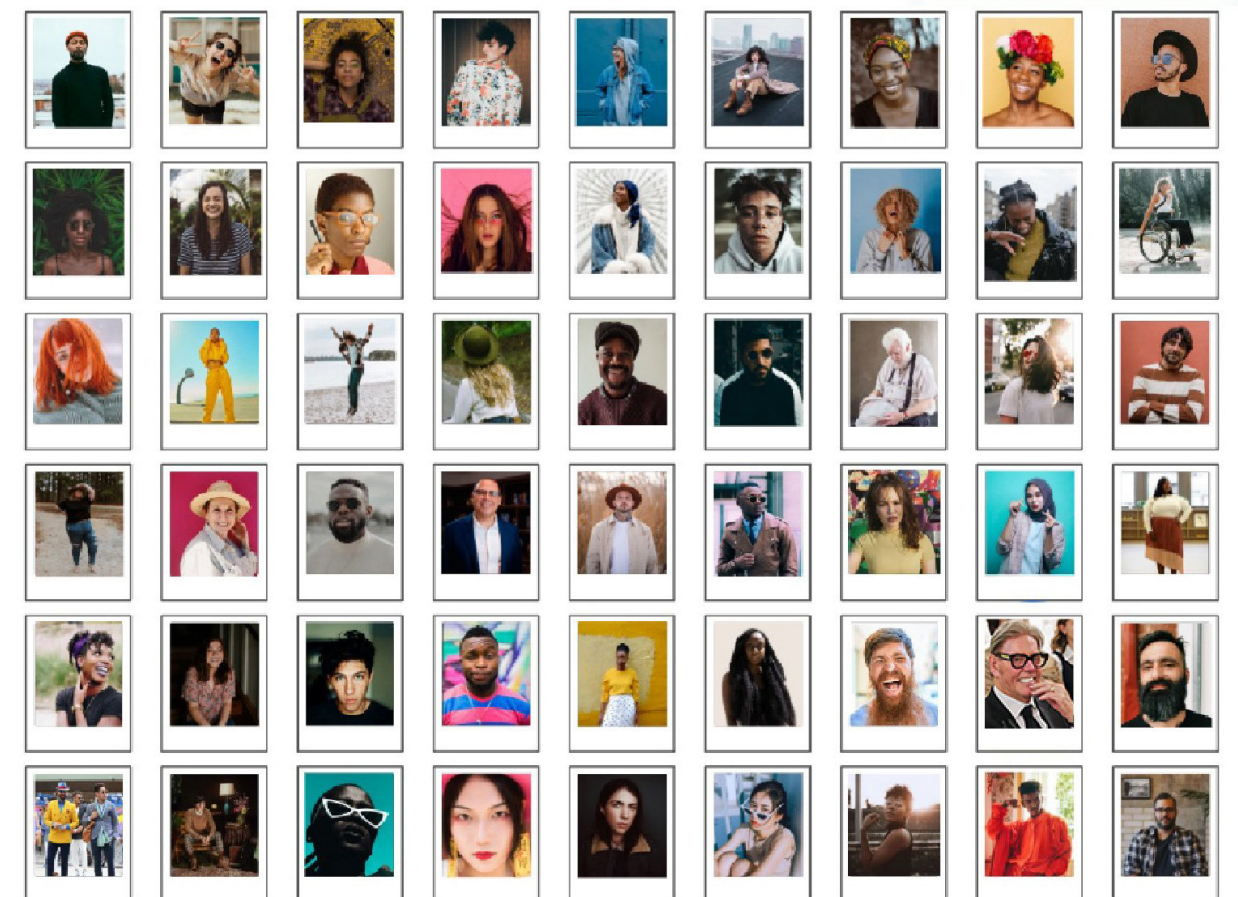
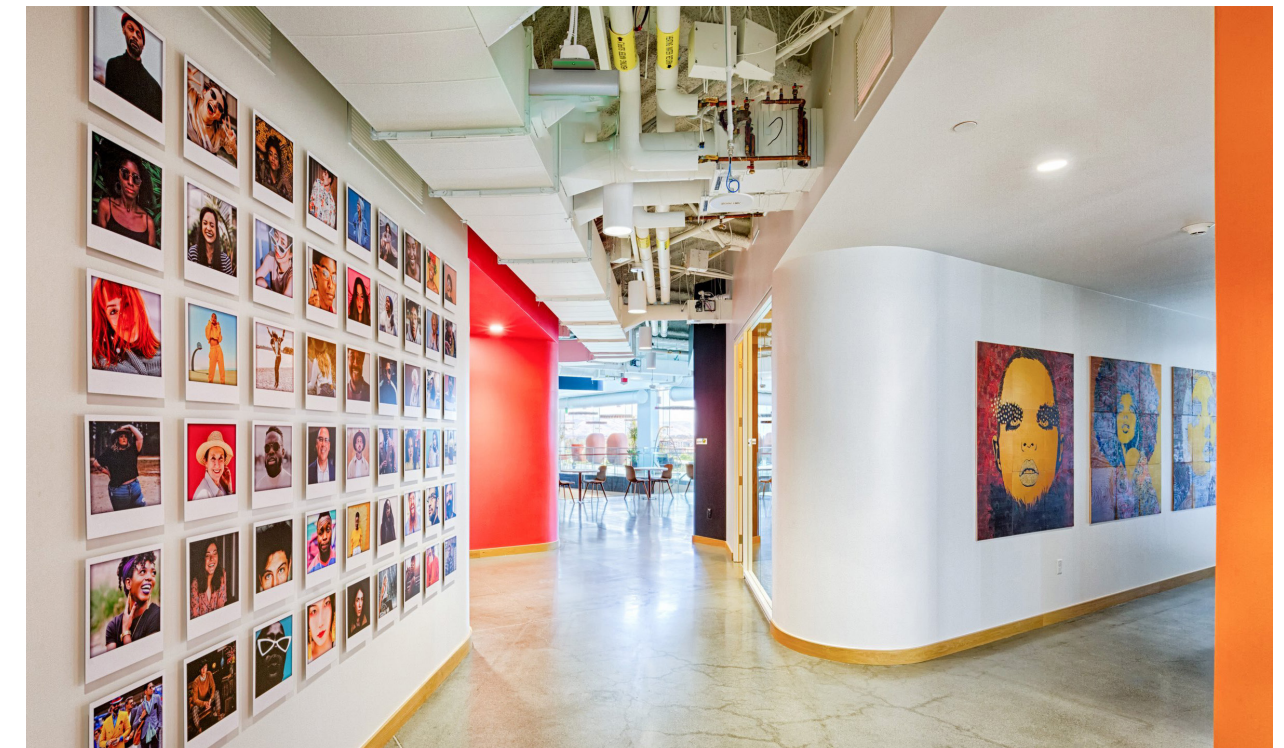


**A6: Photo Wall** goofy fashion selfies and other fashion spoofs. Opportunity for candid and fashion class photos.



GI to print imagery onto Chromaluxe, giving the illusion of actual Polaroid photos, to be installed in a grid on the wall.  
QTY 54 at 10"W x 12"H

\*example shown on right





# **SITE-SPECIFIC & BRANDED INSTALLATIONS**

Custom-designed wallcoverings and digital graphics created to reflect the identity of a space or brand. Each piece responds to the architectural context, cultural location, or concept of the project.



# Parque Kirkland

Kirkland, Washington

## Elevator Map Wallcovering

**Company:** Grand Image LTD  
**Role:** Lead Digital Artist & Content Manager

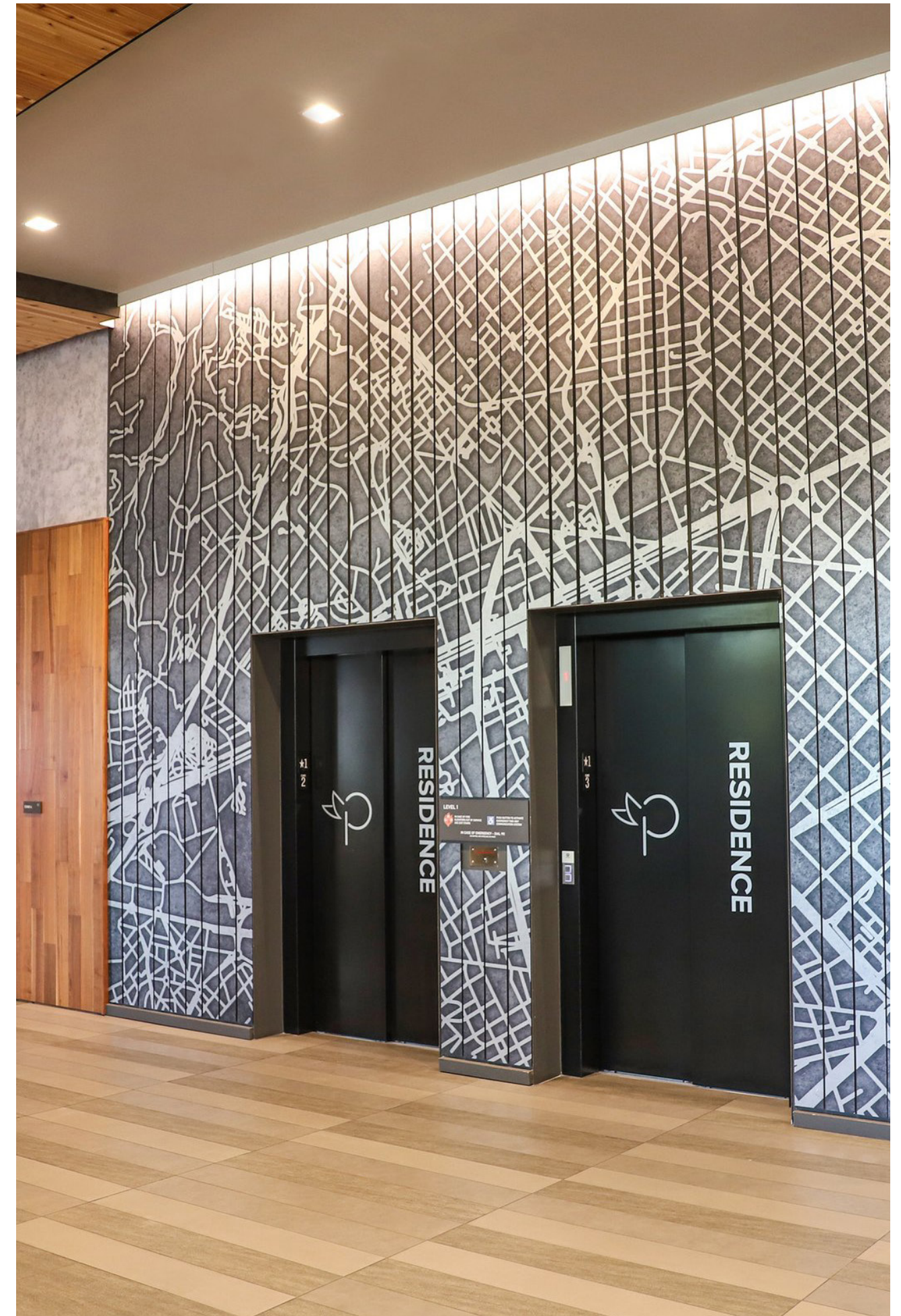
2022

Located less than a mile from the shores of Lake Washington, new construction Parque Kirkland gleams with quiet luxury. The designers harnessed the concept of “genius” with a modern, cutting edge design that leans heavily industrial.

The project was constructed in 2021 and is LEED certified Gold.

I provided this detailed custom city grid wallcovering stretching over 5 floors. The wallcovering graphic is mounted on metal slats.

Designed by Graphite Design Group  
Developed by W.G. Clark Construction





# InterContinental Barcelona

Barcelona, Spain

## Framed Watercolor Compositions

**Company:** Grand Image LTD  
**Role:** Lead Digital Artist & Content  
Manager

2020

Cool off from the simmering passions of Barcelona with an elegant and sophisticated stay at the InterContinental Barcelona. The final design pays tribute to the local community through subtle references to maps, tile patterns, Gaudí's architecture, and influences from Miró and Picasso.

Our client Veitenheimer sourced existing Grand Image artwork aligned with the design brief. In collaboration with IHG, we customized the images' colors and proportions to create a unique final product that honored the client's vision. Earth tones are balanced with playful pops of blue, while hints of gold add refined detail.

All images shown were led by me, with those marked (\*) indicating pieces I personally created.

Designed by BrimeRobbins, Veitenheimer, and IHG.



(\*)





# Bridgewater Commons Mall

Bridgewater, New Jersey

Company: Grand Image LTD

Role: Lead Digital Artist & Content Manager

2021

This project was created for Bridgewater Commons shopping mall in Bridgewater Township, New Jersey. The client requested a floral-themed ceiling wallcovering spanning the entire mall. Using components from paintings by artist Kate Roe-buck, I carefully selected artworks that aligned with the client's aesthetic preferences. I digitally isolated and recolored these elements to match the brand guidelines, added patterns and textures, and composed a unique, cohesive design for the installation.

